



**Public Health**  
Prevent. Promote. Protect.

MACON COUNTY HEALTH DEPT.

503 N. Missouri St.

Macon, MO 63552

660-395-4711

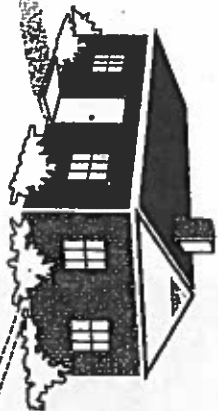
macommohealth.org

VISIT  
OUR NEW  
WEBSITE!



Existing home

House served by lagoon



WATER SUPPLY

50'

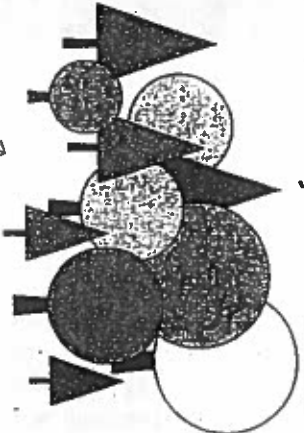
100'

100'

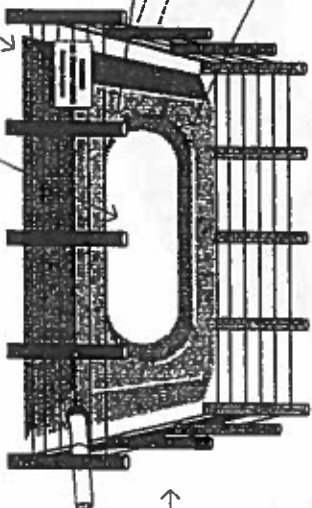
Cleanouts  
no more than  
100' apart

200'

50'



Heavy Timber



75'

100'

The discharge line  
may be placed  
on the uphill  
side to achieve  
the 100'

Warning sign  
designating the nature  
of the facility

50'

Stream, Water Course, Lake or Impoundment

PROPERTY LINE

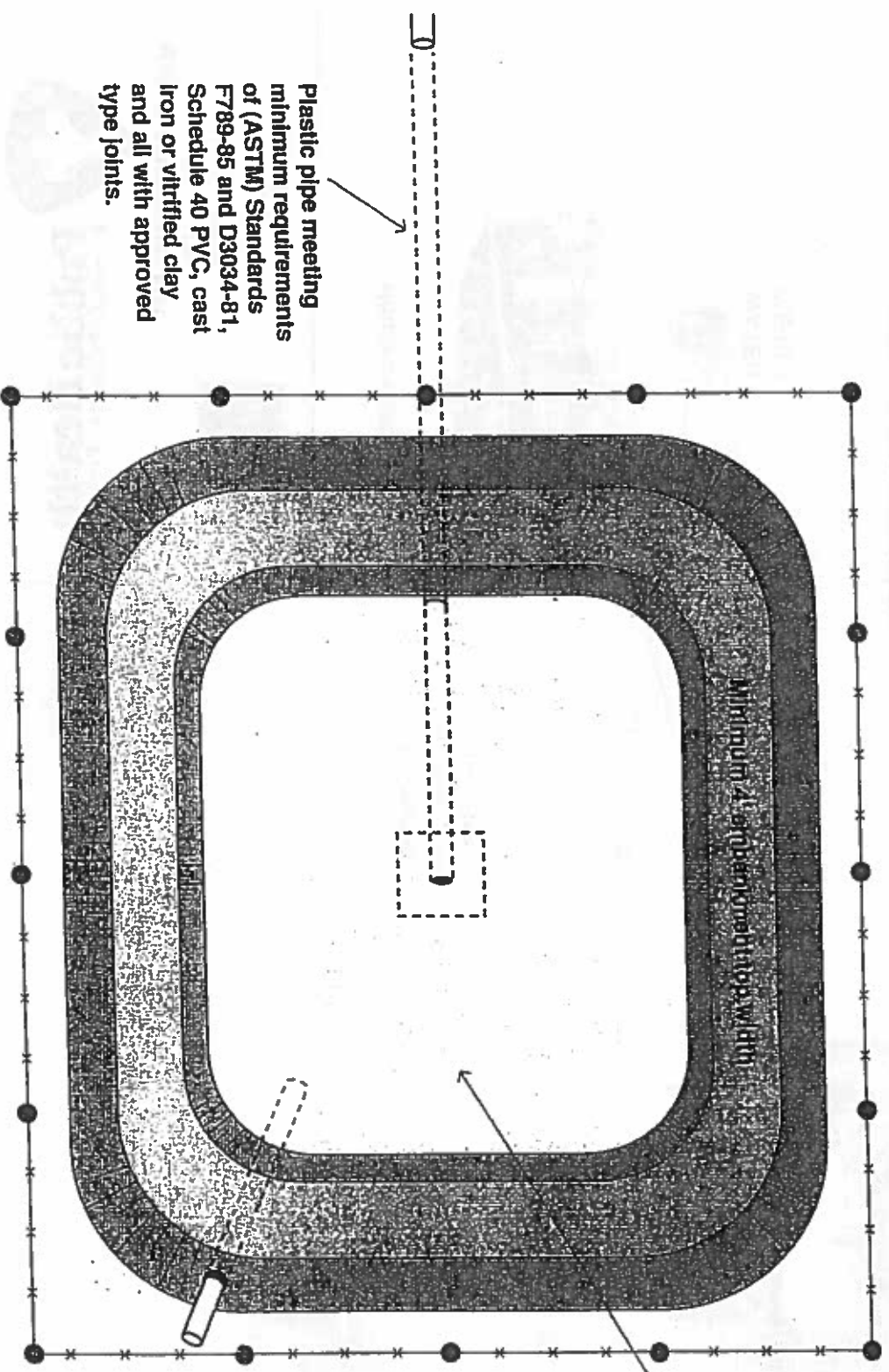
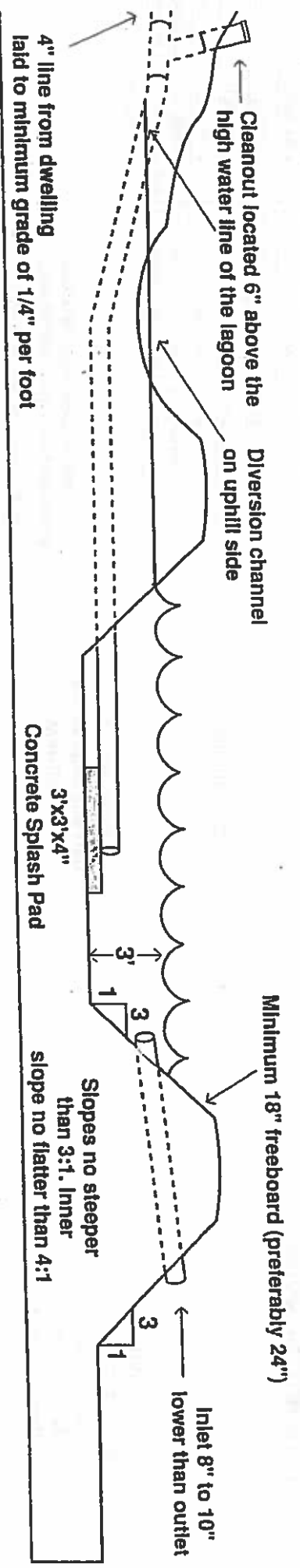
Septic tank recommended and  
if used may be able to reduce  
the size of the lagoon by 20%.  
(See section on sewage tanks and #5  
on waste stabilization ponds)

Sizing The Lagoon

Number of Bedrooms	Lagoon Water surface Area	Each Side, If square	Diameter, If round	Sum of sides, If rectangular
1-2	900 Sq. Ft.	30 Feet	34 Feet	120 Feet
3	1320 Sq. Ft.	37 Feet	41 Feet	145 Feet
4	1760 Sq. Ft.	42 Feet	48 Feet	168 Feet
5	2200 Sq. Ft.	47 Feet	53 Feet	188 Feet

Add 440 sq.ft. of water surface for each additional bedroom. May be reduced 20% if preceded by septic tank (but may not be less than 900 sq. ft.)

For More Information  
Please visit our website  
[macommohealth.org](http://macommohealth.org)



440 square feet of water per bedroom at 3 foot operating level but never less than 900 square feet. See Item #6.

**Public Health**  
 Prevent. Promote. Protect.

**MACON COUNTY HEALTH DEPT.**  
 503 N. Missouri St.  
 Macon, MO 63552  
 660-395-4711  
 maconmhealth.org

VISIT OUR NEW WEBSITE!