



Public Health
Prevent. Promote. Protect.

Macon County Health Department

503 N. Missouri St
Macon, MO 63552

Ph: (660) 395-4711 Fax: (660) 385-2014

Web Site www.maconmohealth.org

November 9, 2020

FOR IMMEDIATE RELEASE

(Macon County, MO) – The Macon County Health Department announces 67 new cases of COVID-19 since the last press release on November 5, 2020. Currently, there are 113 active cases in the county.

New cases include: eight (8) males under the age of 19, 10 females under the age of 19, four (4) males age 20-29, four (4) females age 20-29, seven (7) males age 30-39, five (5) males age 40-49, six (6) females age 40-49, five (5) males age 50-59, six (6) females age 50-59, three (3) males age 60-69, one (1) female age 60-69, one (1) male age 70-79, four (4) females age 70-79, two (2) males age 80-89, one (1) female age 80-89.

The following reflects cases of COVID-19 in Macon County as of the end of the day on November 8, 2020 –

- 113 active positive cases
- 4 hospitalized
- 6 deaths
- 344 released from isolation
- 463 total positive cases

Help slow the spread of COVID-19 by wearing a mask when in public spaces, at events or gatherings and when around others. Wear a mask that covers the mouth and nose, fits snugly around the face without gaps and secures around the chin. A mask can help slow the spread of COVID-19 to others around you including your family, friends, neighbors, coworkers and other community members.

Macon County COVID-19 Update

NOVEMBER 9, 2020

LAST RELEASE ON NOVEMBER 5, 2020



Public Health
Prevent. Promote. Protect.
Macon County Health
Department

660-395-4711

maconmohealth.org

New Cases

67

Under 19: 18	
20-29: 8	
30-39: 7	Female: 35
40-49: 11	Male: 32
50-59: 11	
60-69: 4	
70-79: 5	
80-89: 3	

Active Cases (in Isolation): 113

Hospitalized: 4

Deaths: 6

Released From Isolation: 344

Total Positive Cases: 463

Positive Flu Cases: 1

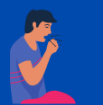
Prevent
COVID-19 &
Stop the
Spread



Practice social
distancing



Wash your hands



Stay home when
you are sick



Wear a mask